



# **Implementation Strategy**

**2023-2025**

Approved by the Board of Directors November 2022.

**Table of Contents**

Introduction ..... 2

Report Adoption, Availability and Comments ..... 2

Community Assessment ..... 4

Prioritized Health Needs the Hospital Will Address ..... 5

Strategies to Address Prioritized Health Needs..... 6

Evaluation of Impact ..... 9

Health Needs the Hospital Will Not Address ..... 9

## Introduction

Beverly Hospital has 202 licensed beds and provides a full range of inpatient and outpatient care. From emergency services and hospitalization to outpatient procedures, Beverly Hospital offers the latest technology for diagnostic and treatment options. A medical staff of over 375 physicians, representing a wide spectrum of specialties, is supported by experienced and dedicated employees and volunteers.

Beverly Hospital is accredited by Det Norske Veritas (DNV) and is an ISO 9001:2015 compliant organization. We provide services driven by the health needs of the community. Over time we have not only updated the way we deliver basic health care, but by reaching beyond the walls of our hospital and working with other like-minded organizations, we seek to continuously meet the changing needs of our community.

Beverly conducted a Community Health Needs Assessment (CHNA) in 2022, which was adopted in November 2022. The CHNA complied with state and federal regulations guiding tax-exempt hospitals, assessing the significant health needs for the hospital's service area. The CHNA and Implementation Strategy help guide the hospital's community health improvement programs and community benefit activities, as well as its collaborative efforts with organizations that share a mission to improve health.

### **Purpose**

California Senate Bill 697 and the Patient Protection and Affordable Care Act through IRS section 501(r)(3) regulations direct nonprofit hospitals to conduct a CHNA every three years and develop a three-year Implementation Strategy that responds to identified community needs. This Implementation Strategy details how Beverly Hospital plans to address the significant health needs identified in the 2022 CHNA. The hospital will build on previous CHNA efforts and existing initiatives, while also considering new strategies and efforts to improve health.

### **Report Adoption, Availability and Comments**

This Implementation Strategy was adopted by the Board of Directors in November 2022. The CHNA and Implementation Strategy are available on the hospital's website at [www.beverly.org/about-us/in-the-community/](http://www.beverly.org/about-us/in-the-community/). Public comment on the CHNA and Implementation Strategy is encouraged as community input is used to inform and influence this work. Feedback can be submitted here: <https://beverly.org/about-us/contact-us/community-health-needs-assessment-and-implementation-strategy-feedback-form>

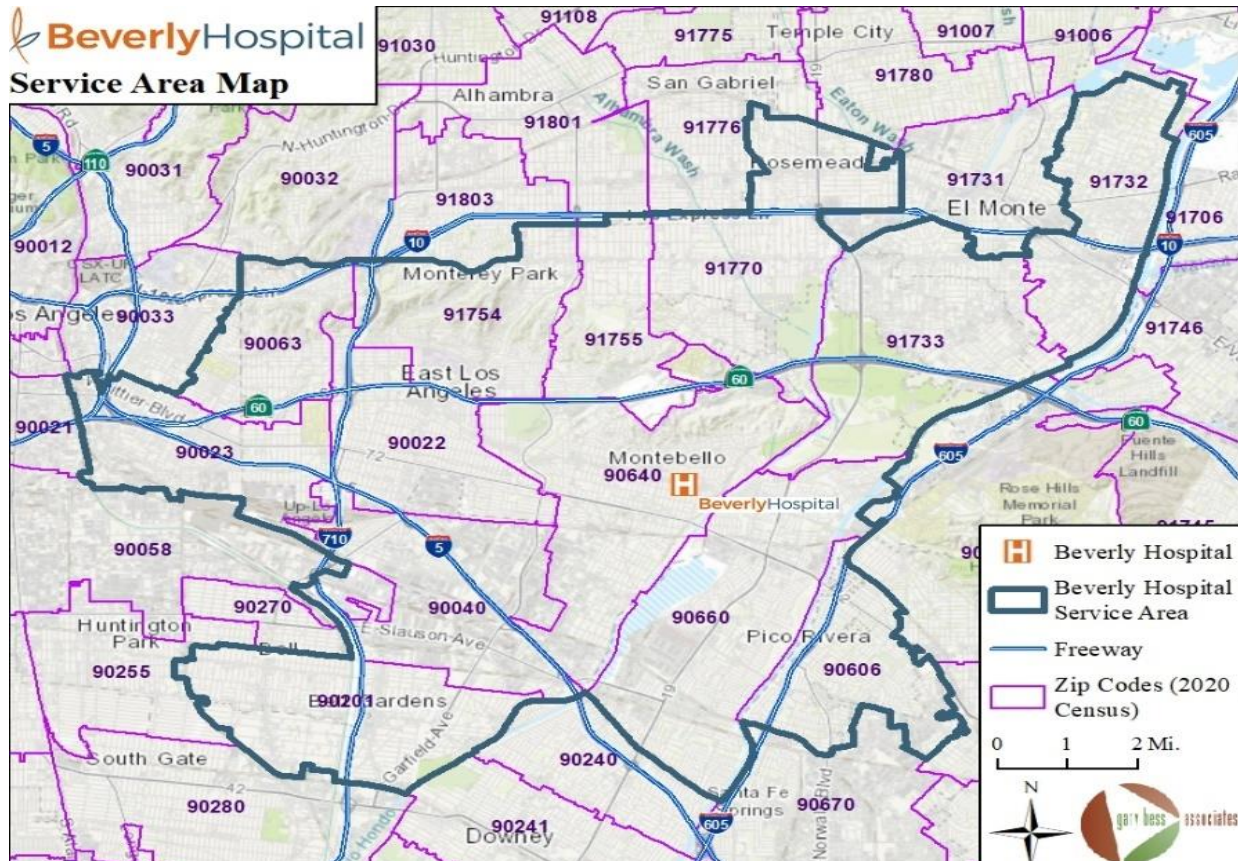
## Definition of the Community Served

Beverly Hospital is located at 309 W. Beverly Blvd. Montebello CA, 90640. The hospital’s service area encompasses 13 ZIP Codes in 11 cities or communities. The service area is served by the Los Angeles County 1<sup>st</sup> and 4<sup>th</sup> Supervisor Districts and falls within the Los Angeles County Service Planning Areas (SPAs) 3 and 7. Beverly tracks ZIP Codes of origin for patient admissions. The service area was determined from the ZIP Codes that reflect a majority of patient admissions from the local geographic area.

**Beverly Hospital Service Area**

	ZIP Code
Bell/Bell Gardens	90201
Commerce	90040
East Los Angeles	90022, 90023, 90063
El Monte	91732
Montebello	90640
Monterey Park	91754, 91755
Pico Rivera	90660
Rosemead	91770
South El Monte	91733
Whittier	90606

**Map of the Beverly Hospital Service Area**



## Community Assessment

The 2022 CHNA process included collection and analysis of data sources for the hospital service area. Secondary data were collected from local, county, and state sources to present community demographics, social determinants of health, access to health care, birth indicators, leading causes of death, acute and chronic disease, health behaviors, mental health, substance use and preventive practices. Where available, these data are presented in the context of Los Angeles County and California, framing the scope of an issue as it relates to the broader community. Secondary data for the service area were collected and documented in data tables with narrative explanation. In addition, primary data were collected directly from stakeholders in the community. Beverly conducted interviews with community stakeholders to obtain input on health needs, barriers to care and resources available to address the identified health needs. The collected data were used to identify significant community needs.

## Significant Community Health Needs

The significant health needs identified in the 2022 CHNA are listed below in priority order. These identified significant health needs were analyzed by the hospital, and then prioritized with community input through interviews with representatives from community-based organizations.

- Mental health
- Housing and homelessness
- Chronic disease
- Economic insecurity
- Access to health care
- Overweight and obesity
- Preventive practices
- COVID-19
- Substance use
- Violence and community safety
- Education
- Birth indicators

## Prioritized Health Needs the Hospital Will Address

Once the CHNA was completed, hospital leaders met to discuss the significant health needs. The following criteria were used to determine the significant health needs the hospital will address in the Implementation Strategy:

**Existing Infrastructure:** There are programs, systems, staff and support resources in place to address the issue.

**Established Relationships:** There are established relationships with community partners to address the issue.

**Ongoing Investment:** Existing resources are committed to the issue. Staff time and financial resources for this issue are counted as part of the community benefit effort.

**Focus Area:** The hospital has acknowledged competencies and expertise to address the issue and the issue fits with the organizational mission.

The CHNA served as the resource document for the review of health needs as it provided data on the scope and severity of issues and included community input on the health needs. The community prioritization of needs was also taken into consideration. As a result of the review of needs and application of the above criteria, Beverly will address the following needs:

- Access to care
- Chronic disease (including overweight and obesity)
- Mental health
- Preventive care

## Strategies to Address Prioritized Health Needs

For each health need the hospital plans to address, the Implementation Strategy describes the following: actions the hospital intends to take, including programs and resources it plans to commit, anticipated impacts of these actions, and planned collaboration between the hospital and other organizations.

<b>Health Need: Access to Health Care and Preventive Practices</b>	
<b>Goal</b>	<ul style="list-style-type: none"> <li>Improve the health of medically underserved individuals in the community.</li> </ul>
<b>Anticipated Impact</b>	<ul style="list-style-type: none"> <li>Increase access to health care and reduce barriers to care.</li> <li>Increase compliance with preventive care recommendations (screenings, immunizations, lifestyle, and behavior changes).</li> </ul>
<b>Strategy or Program</b>	<b>Summary Description</b>
Financial assistance for the uninsured or underinsured	Provide financial assistance through free and discounted care and government health programs for low-income patients for health care services, consistent with the hospital’s financial assistance policy.
Insurance enrollment	Assist persons who are uninsured or underinsured to enroll in publicly available health insurance programs.
Transportation	Provide transportation support to increase access to health care services.
Preventive screenings and health education	Offer free health screenings and provide education and resources focused on healthy living and disease prevention.
Breastfeeding support services	Promote breastfeeding through education classes and lactation consultants.
Community support	Provide donations and in-kind support to nonprofit community organizations that address access to health and preventive services.
<b>Planned Partnerships and Collaborators</b>	BeverlyCare Community health centers/community clinics Community-based organizations Every Woman Counts program Los Angeles County Department of Public Health Senior centers UberHealth YMCA

<b>Health Need: Chronic Disease (Including Overweight and Obesity)</b>	
<b>Goal</b>	<ul style="list-style-type: none"> <li>• Reduce the impact of chronic diseases and overweight and obesity on health.</li> </ul>
<b>Anticipated Impact</b>	<ul style="list-style-type: none"> <li>• Improve screening, prevention, and treatment of chronic diseases.</li> <li>• Improve healthy eating behaviors and increase physical activity.</li> </ul>
<b>Strategy or Program</b>	<b>Summary Description</b>
Diabetes screening and education	Provide education on prevention, management, and treatment of diabetes to the community. Offer diabetes counseling in English and Spanish.
Senior exercise	Offer health education, exercise classes, and social activities to increase healthy habits and reduce isolation among seniors.
Community CPR and first aid	Provide CPR and first aid training at the hospital, health fairs and in partnership with local organizations.
Wound care	Through the Center for Advanced Wound Healing and Hyperbaric Medicine, provide education on the prevention and treatment of wounds.
Vaccines	Provide free flu vaccines in the community.
Health education	Provide community health sessions focused on chronic disease prevention, management, and treatment.
Community support	Provide donations and in-kind support to nonprofit community organizations dedicated to addressing chronic diseases, healthy eating and physical activity.
<b>Planned Partnerships and Collaborators</b>	Community health centers/community clinics Community-based organizations Local churches Los Angeles County Department of Public Health Schools and school districts Senior centers



<b>Health Need: Mental Health</b>	
<b>Goal</b>	<ul style="list-style-type: none"> <li>• Increase access to mental health services in the community.</li> </ul>
<b>Anticipated Impact</b>	<ul style="list-style-type: none"> <li>• Improve screening, prevention, and treatment of mental health conditions.</li> </ul>
<b>Strategy or Program</b>	<b>Summary Description</b>
Mental health services	Partner with the City of Montebello to provide services through the hospital Emergency Care Center.
Tele-Psychiatry	Provide a Tele-Psychiatry Program for persons requiring a psychiatric consultation.
Support groups	Offer support groups for bereavement and for caregivers who assist people with Alzheimer's disease or dementia.
Health education	Provide education classes to increase knowledge of mental health issues and to increase awareness of prevention and treatment services available in the community.
Community support	Provide donations and in-kind support to nonprofit community organizations that address mental health services.
<b>Planned Partnerships and Collaborators</b>	BHC Alhambra Hospital Community health centers/community clinics Community-based organizations City of Montebello Law enforcement agencies Montebello Fire Department Schools and school districts Senior centers Youth-serving organizations

## **Evaluation of Impact**

Beverly Hospital is committed to monitoring and evaluating key initiatives to assess the programs and activities outlined in this Implementation Strategy. We have implemented a system for the collection and documentation of tracking measures, such as the number of people reached/served, and collaborative efforts to address health needs. An evaluation of the impact of the hospital's actions to address these significant health needs will be reported in the next scheduled CHNA.

## **Health Needs the Hospital Will Not Address**

Beverly Hospital cannot directly address all the health needs present in the community, as a result, we will concentrate on those health needs that we can most effectively address given our areas of focus and expertise. Taking existing hospital and community resources into consideration, Beverly will not directly address the remaining health needs identified in the CHNA, including birth indicators, economic insecurity, education, housing and homelessness, substance use, and violence and community safety. Additionally, the hospital does not intend to directly emphasize COVID-19 interventions in the Implementation Strategy but will continue to deliver acute medical care to address COVID-19.